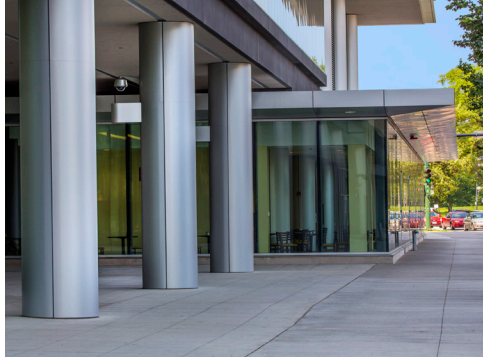
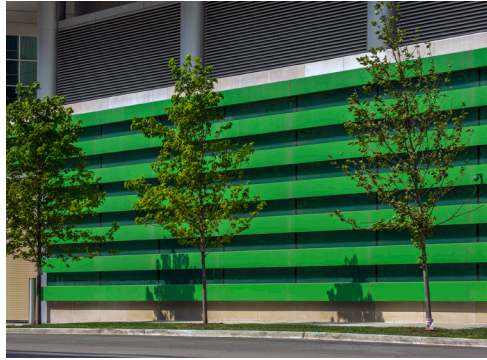
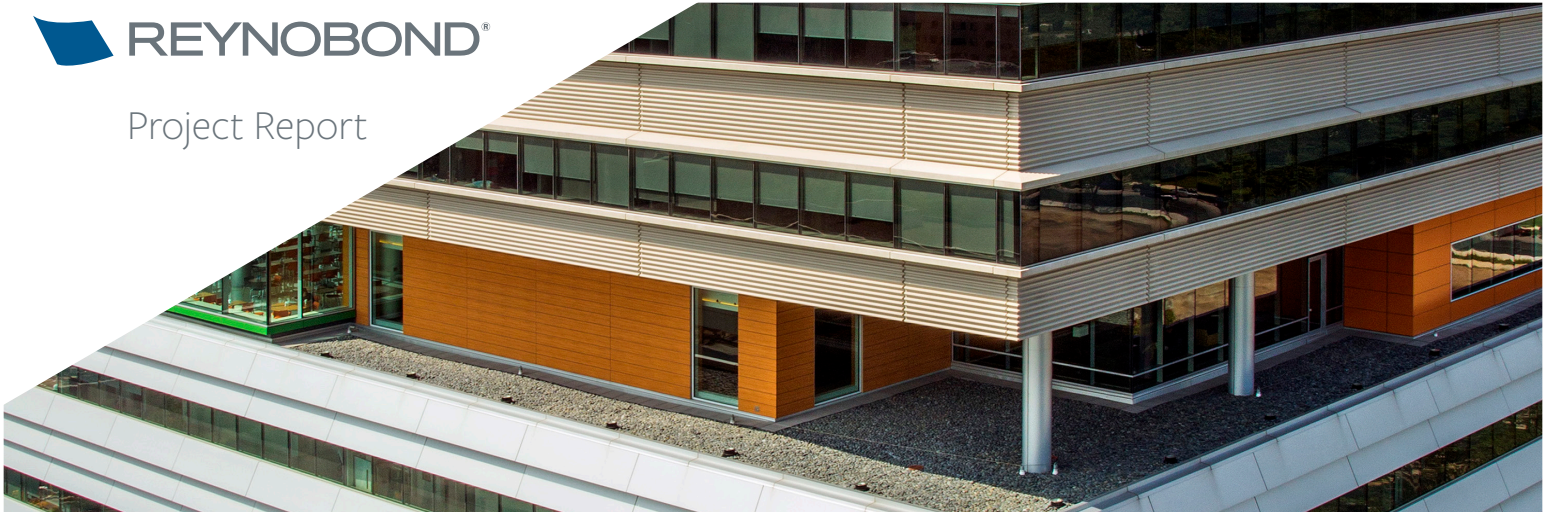




University of Chicago  
Medicine Center of  
Care and Discovery



**PROJECT REPORT**

# University of Chicago Medicine Center for Care and Discovery

Chicago, Illinois

**ARCHITECTS**

Rafael Vinoly Architects - Design  
Cannon Design - Health Care Planning

**CONTRACTOR**

Gilbane  
W.E. O'Neil

**FABRICATOR**

Creative Panel

**PRODUCT**

185,783 square feet Reynobond® Architecture  
4mm FR Aluminium Composite Panels (ACM)

**SURFACE**

Color: Bright Silver Metallic  
Custom: Gray, Dark Green, Orange  
Coating: COLORWELD® 500XL

**APPLICATION**

Dry-Joint Rain-Screen System

**ABOUT**

The University of Chicago Medicine Center for Care and Discovery is a 10-story medical facility located in Chicago, Illinois. Home to world-class medical and surgical care, the Center for Care and Discovery houses 436 beds, 52 intensive care beds, 9 suites for advanced imaging and interventional procedures, and 23 operating rooms designed to accommodate hybrid and robotic procedures.

The 1.2 million square foot facility is the largest building on campus and used Reynobond® FR ACM panels in the design for durability leaving the Center for Care and Discovery a standing staple on campus for years to come.

Using a dry-joint rain-screen composite panel system, Creative Panel fabricated and installed over 185,783 square feet of Reynobond® FR ACM panels in a high performing, coil coated Colorweld® 500XL Bright Silver Metallic and three custom colors, (Gray, Dark Green, and Orange) all backed by a 30-year warranty.