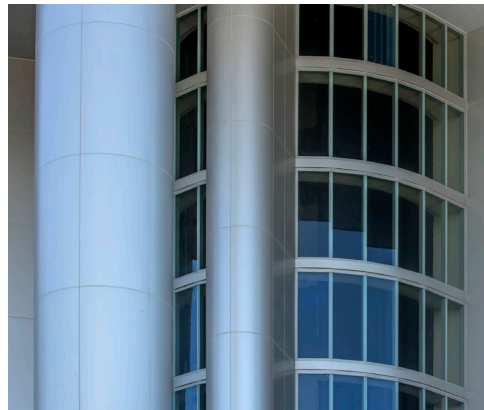
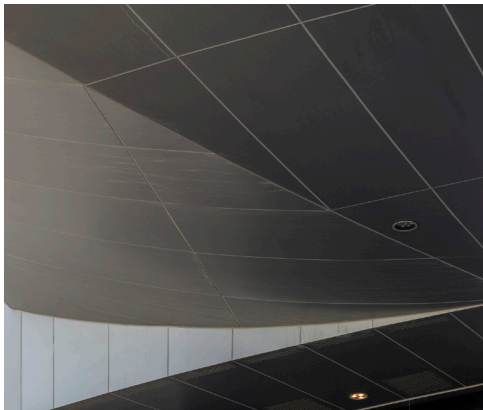




Porsche
Design Tower



PROJECT REPORT

Porsche Design Tower

Sunny Isles Beach, Florida

ARCHITECT

Sieger Suarez Partnership, Miami, Florida

DESIGNER

Porsche Design Group, Ludwigsburg, Germany

GENERAL CONTRACTOR

Coastal Construction Group of South Florida,
Miami, Florida

PANEL FABRICATOR

MillerClapperton, Austell, Georgia

PANEL TYPE

4mm Reynobond® aluminum composite
material with a fire-resistant core

QUANTITY

52,941 square feet

FINISH

Colorweld® 500 finished in two custom
coatings—3-coat Steel City Silver and Graphite Gray

APPLICATION

Wet-seal system

REYNOBOND PANEL-CLAD TOWER DRIVES RESIDENTS WILD

Billionaire car enthusiasts are wild about their residences in the **Reynobond®** panel-clad Porsche Design Tower on Miami's Sunny Isles Beach. The residential skyscraper—the Porsche brand's first foray into residential real estate—comes fully loaded with auto-centric amenities and design elements that reflect the sinuous curves and rich appointments of a Porsche automobile.

Designed to embody the principles and spirit of the Porsche brand and capture the interest of billionaire auto enthusiasts, the ultra-luxurious, 60-story residential tower features a refined functional design, smart functions and an impressive level of technical innovation including a first-of-its-kind robotic parking system with three car elevators that whisk the residents and their luxury automobiles from the ground to their own private, in-unit sky garages; glass wall between the garage and living quarters allow the owners to view their exotic autos in gallery-like settings from inside their homes.

Like the streamlined body of a Porsche automobile, the simplicity of the tower's cylindrical form belies the complexity of the engineering within. **Reynobond®** panels were used to clad canopies, a featured entrance wall, three ground-to-roof shear walls, that run the full height of the building; and column covers, which are nine feet in diameter and 76 feet tall. According to the panel fabricator, metal panels were specified for the building envelope to express the automotive origin of the brand. The **Reynobond®** panels—specified in lieu of solid aluminum plate—deliver perfect flatness from the ground looking 60 stories up, and match the caliber of the luxurious, European finishes spec'd for the interior.

In a further nod to the Porsche automotive brand, the **Reynobond®** panels were finished in two custom **Colorweld® 500** paint coatings; advanced coil-coated technology engineered to present a good resistance to corrosion, UV, and aging. The fabricator worked with Arconic to secure a special 30-year finish warranty for the **Reynobond®** panels on this project.

Set back from the street on 2.2 miles of beachfront property just north of Miami Beach, the tony enclave houses 132-luxurious condominium units, a private movie theater, spa, fitness center, restaurants and an onsite Car Concierge. The sleek **Reynobond®**-panel clad tower fully embodies the Porsche brand's driving design philosophy: Engineered luxury meets real estate.¹



ARCONIC ARCHITECTURAL PRODUCTS

50 Industrial Boulevard
Eastman, GA 31023-4129

Tel. 800 841 7774
reynobond.com

©2018 Arconic Architectural Products LLC. Reynobond® and Colorweld® are registered trademarks of Arconic, Inc. Leadership in Energy & Environmental Design™ is a trademark and LEED® is a registered trademark of U.S. Green Building Council

¹ Porsche Design Group:
[http://press.porsche-design.com/index.php?id=152&L=1&tx_ttnews\[tt_ews\]=45&cHash=f62fa3b256083ec4065763814bc4276b](http://press.porsche-design.com/index.php?id=152&L=1&tx_ttnews[tt_ews]=45&cHash=f62fa3b256083ec4065763814bc4276b)