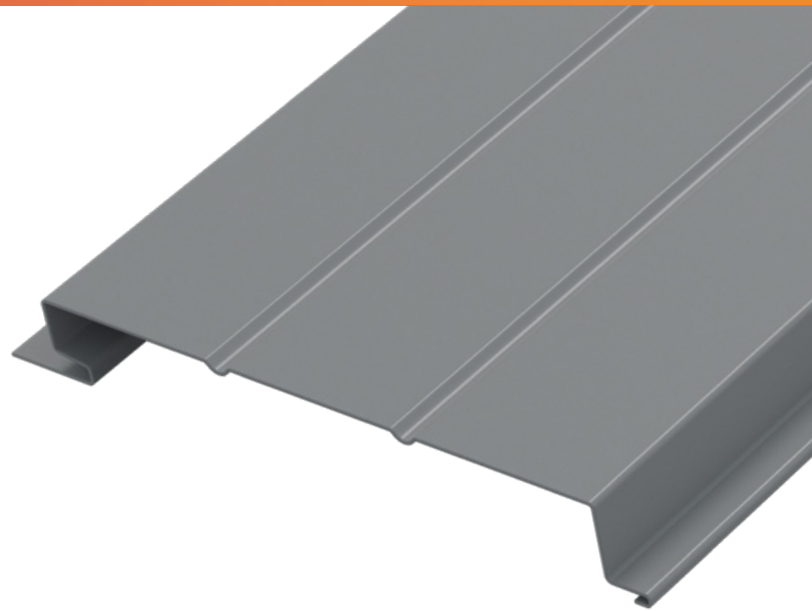


Profiled Aluminum Flush Wall Mount Technical Data Sheet

Flush Wall panels are a classic concealed fastener panel with a wide range of applications for architectural, industrial, or commercial projects. Flush Wall panels can be used for wall panels, fascia, or soffit applications with perforation available.



Material Specifications

3000 series aluminum alloy in compliance with the Aluminum Association Composition Specifications and conforming to ASTM B209 is standard.

Product Notes

- Remove protective film quickly after installation
- Panels should be laid flat in a dry, indoor environment during storage
- Recommended for use as siding or soffit
- Can be applied vertically or horizontally in siding application
- Panel Length: Maximum - 20' Minimum - 5'
- Panel Width: 12"

Testing

Structural ASTM E72

Product Installation

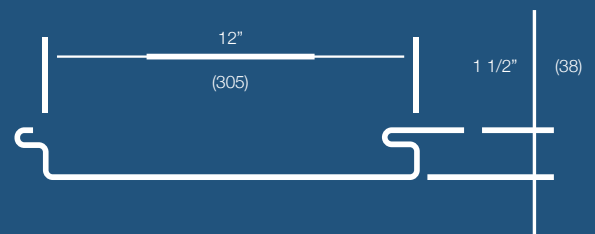
Flush Wall panels are recommended for siding and soffit only. When used in wall applications, Flush Wall panels can be installed vertically or horizontally. Install plumb, level, and straight so it is watertight and without waves or other distortions, allowing for thermal movement considerations. When installing horizontally, top down installation is necessary to ensure proper seam orientation. Apply sealant tape or caulking as necessary at flashing and panel joints to prevent water penetrati

Product Maintenance and Warranty

Flush Wall panels provide a 20 year paint-finish warranty for cracking, chipping, peeling, fading and chalking - providing confidence in a long-lasting application. To ensure the durability of your Flush Wall panels, use proper care. Remove filings, grease, stains, marks or excess sealants from panel system to prevent staining. Store panels and flashing in a safe, dry environment.

Panel Dimensions

Coverage Width	12"
Profile Depth	1 1/2"
Thickness	0.040"
Weight	0.62 lb/ft ²



Disclaimer

Laws and building and safety codes governing the design and use of AAP's products, and specifically aluminum composite materials, vary widely. It is the responsibility of the Laws and building and safety codes governing the design and use of AAP's products, and specifically aluminum materials, vary widely. It is the responsibility of the owner, the architect, the general contractor, the installer and the fabricator/transformer, consistent with their roles, to determine the appropriate materials for a project in strict conformity to all applicable national, regional and local building codes and regulations.